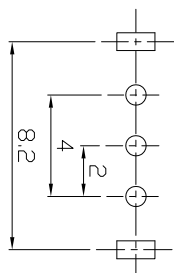
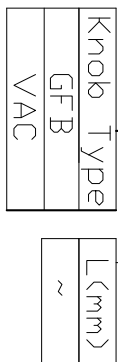


RoHS

MODEL CODE

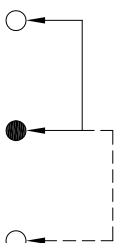
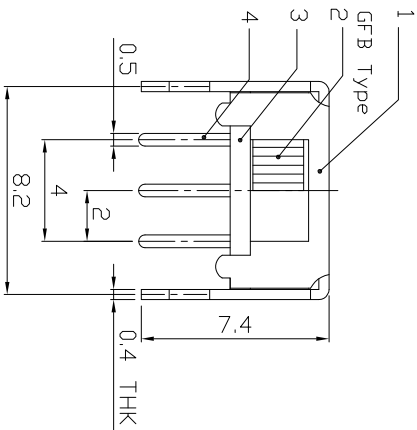
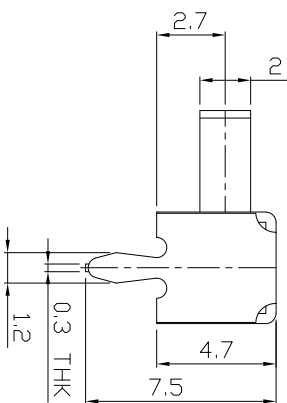
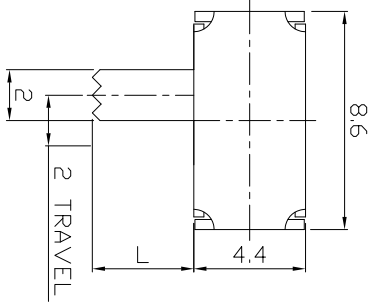
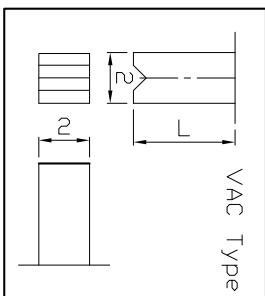
SK-12D07 - GFB



P.C.B LAYOUT
BOTTOM VIEW

NO.1	
PART NO	L
	X

Height (高度) :



CIRCUIT DIAGRAM

Main technical specifications:

Rated load (额定负荷) :	DC 50V 30mA
Contact impedance (接触阻抗) :	≤ 100m Ω MAX
Insulation impedance (绝缘阻抗) :	≥ 100M Ω MIN
TIMING	NON-SHORTING
OPERATING LIFE (电气寿命) :	100,000 cycles
Usage temperature (使用温度) :	-25 °C to 85 °C
CIRCUIT	1P2T
Trip (行程) :	2±0.2mm
Operating force (操作力) :	1 2 3 4 250±100g 5 6

public errand (公差) : ±0.2mm unit (单位) : mm

LCZY ELECTRONICS(SHEN ZHEN)CO.,LTD

COPYRIGHT RESERVED,PLEASE DO NOT COPY.

PART NAME	SWITCH	DRAWING	G.L.CHEN	DWG.No.	LCZY
PART NO.	SK-12D07	CHECK	Z.LIU	REV.	A1
UNIT :	mm	APPROVAL		DATE	SK-09-2019
TOLERANCE	UP TO 5	SCALE	2:1	PAGE	1 OF 1
OTHERWISE	ABOVE 5~30				
ANGLE	±0.2				
	±0.3				
	±0.5				
	±3				

F

E

D

SK-12D07-□

B

A

F

E

D

C

B

A

1

2

3

4