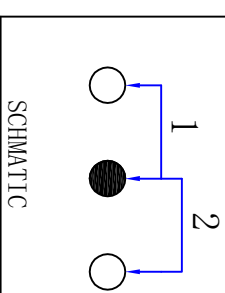
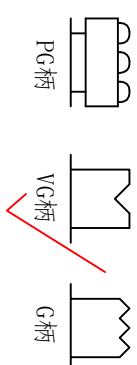
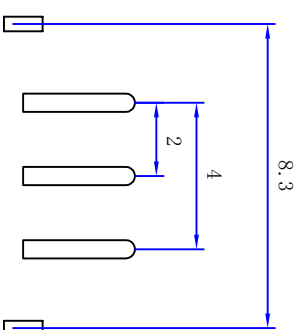
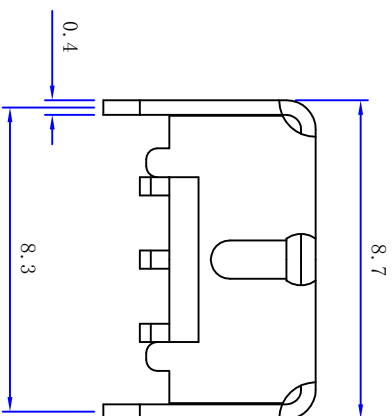
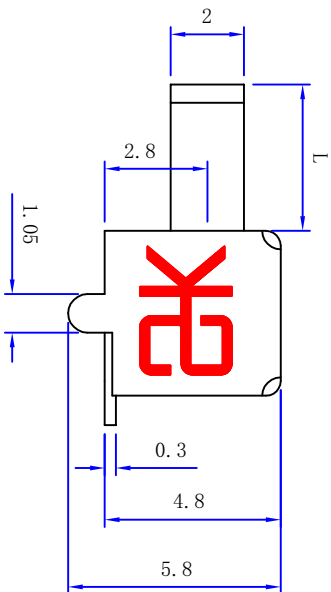


RoHS



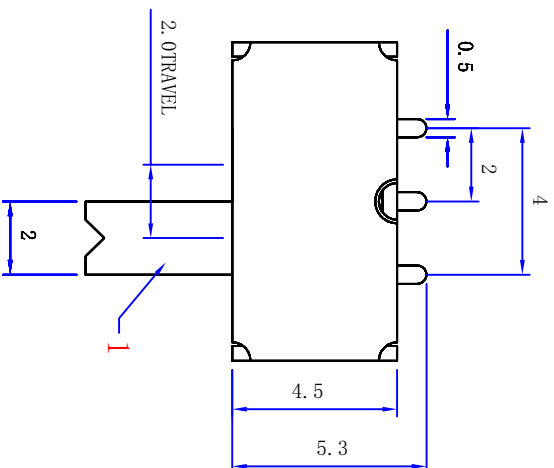
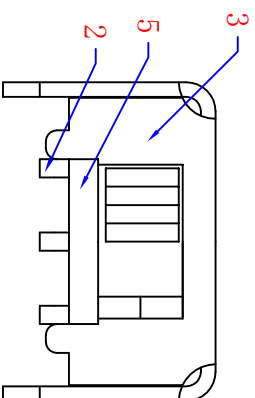
电气性能参数:

1. 额定负载: DC50V 0.3A
2. 接触电阻: 100毫欧以下
3. 绝缘电阻: 100兆欧以上
4. 耐压: AC 500V
5. 力度: 300 $\pm$ 100gf
6. 寿命: 10000次
7. 回流焊: 250 $\pm$ 5度

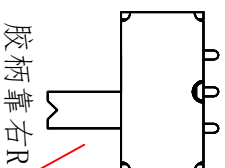
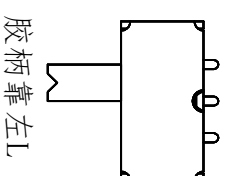
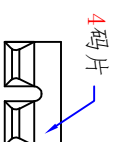
过回流焊型号区分如下:

SK12D03回流焊240度以下

SK12D37回流焊250 $\pm$ 5度



L2-8



1: 2

public errand (公差):  $\pm 0.2$ mm unit (单位): mm

LCZY ELECTRONICS(SHEN ZHEN)CO.,LTD

COPYRIGHT RESERVED,PLEASE DO NOT COPY.

PART NAME

SWITCH

DRAWING

G.L.CHEN

DWG.No.

LCZY

PART NO.

SK-12D37

CHECK

Z.LIU

REV.

A1

UNIT :

mm

TOLERANCE

OTHERWISE

UP TO 5

ABOVE 5~30

ANGLE

30

±0.2

±0.3

±0.5

±3

DATE

SK-09-2019

F E D C B A

F

E

D

C

B

A

1

4

3

2

1