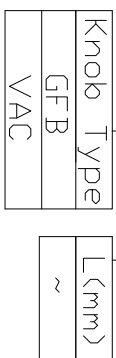
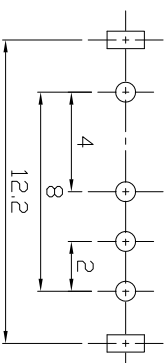
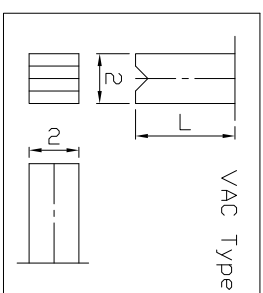


MODEL CODE

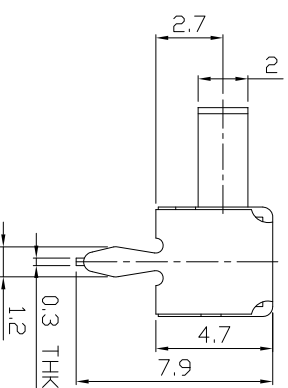
SK-13D01-GFB



CIRCUIT DIAGRAM



P.C.B LAYOUT
BOTTOM VIEW



Height (高度) :

| | |
|---------|---|
| NO.1 | |
| PART NO | L |
| | X |

Main technical specifications:

| | |
|-------------------------------|-----------------|
| Rated load(额定负荷) : | DC 50V 30mA |
| Contact impedance (接触阻抗) : | ≤100m Ω MAX |
| Insulation impedance (绝缘阻抗) : | ≥100M Ω MIN |
| TIMING | NON-SHORTING |
| OPERATING LIFE (电气寿命) : | 100,000 cycles |
| Usage temperature (使用温度) : | -25 °C to 85 °C |
| CIRCUIT | 1P3T |
| Trip(行程) : | 2±0.2mm |
| Operating force(操作力) : | |

public errand (公差) : ±0.2mm unit (单位) : mm

LCZY ELECTRONICS(SHEN ZHEN)CO.,LTD

COPYRIGHT RESERVED,PLEASE DO NOT COPY.

| | | | | | |
|-----------|------------|----------|----------|---------|------------|
| PART NAME | SWITCH | DRAWING | G.L.CHEN | DWG.No. | LCZY |
| PART NO. | SK-13D01 | CHECK | Z.LIU | REV. | A1 |
| UNIT : | mm | APPROVAL | | DATE | SK-09-2019 |
| TOLERANCE | UP TO 5 | SCALE | 2:1 | PAGE | 1 OF 1 |
| OTHERWISE | ABOVE 5~30 | | | | |
| ANGLE | ±0.2 | | | | |
| | ±0.3 | | | | |
| | ±0.5 | | | | |
| | ±3° | | | | |

F

E

D

SK-13D01-□

B

A