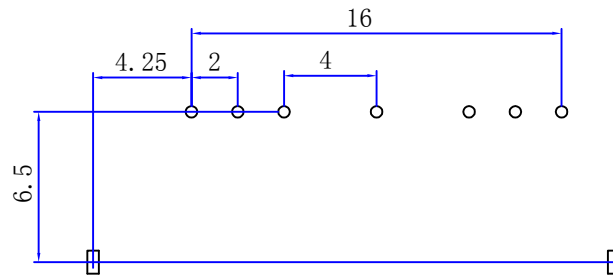
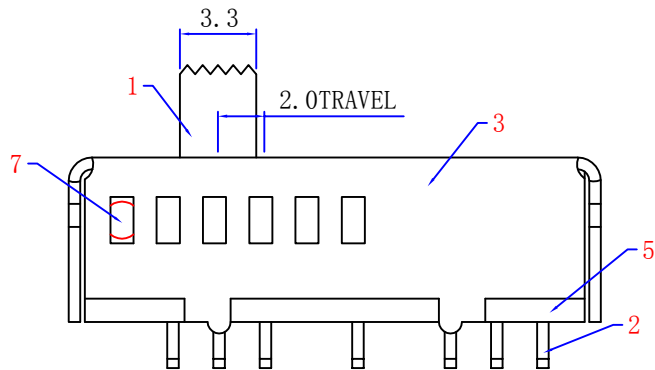
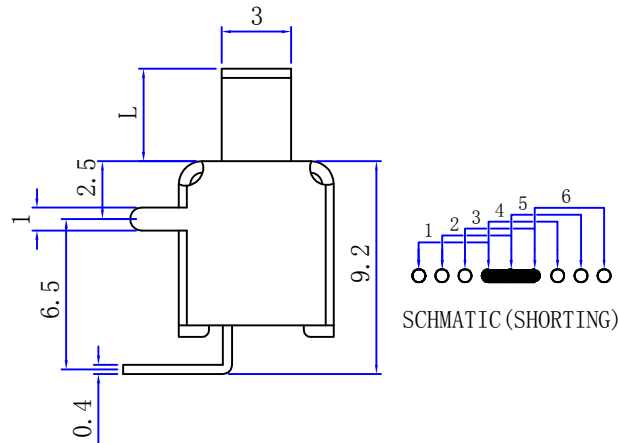
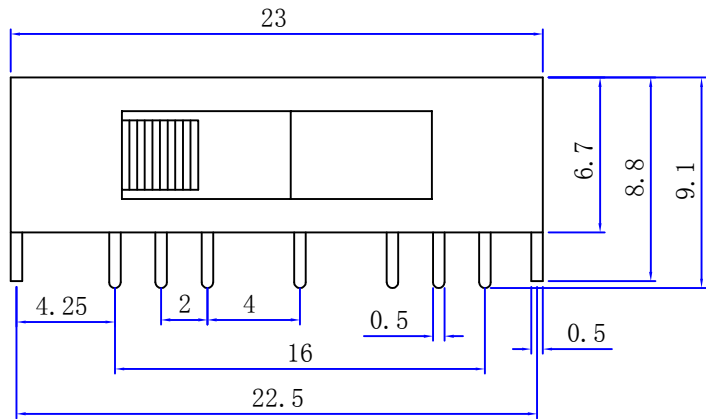


RoHS



L2-10

Height(高度) :

NO.1	
PART NO	L
	X

Main technical specifications:

Rated load(额定负荷):	DC 50V 0.3A		
Contact impedance(接触阻抗):	100m MAX		
Insulation impedance(绝缘阻抗):	100M MIN		
TIMING	NON-SHORTING		
OPERATING LIFE(电气寿命):	100,000 cycles		
Usage temperature(使用温度):	-25 to 85		
CIRCUIT	1P6T		
Trip(行程):	2 ± 0.2mm		
Operating force(操作力):	1	2	
	3	4	350 ± 150g
	5	6	

public errand(公差) : ±0.2mm unit(单位) : mm

LCZY ELECTRONICS(SHEN ZHEN)CO.,LTD

COPYRIGHT RESERVED,PLEASE DO NOT COPY.

PART NAME		SWITCH		DRAWING	G.L CHEN	DWG.No.	LCZY	
PART NO.		SK-16D01		CHECK	Z.LIU	REV.	A1	
UNIT :	TOLERANCE	OTHERWISE	UP TO 5 ABOVE 5~30 ABOVE 30 ANGLE	±0.2 ±0.3 ±0.5 ±3'	ANGLE	APPROVAL	DATE	SK-09-2019
						SCALE	PAGE	1 OF 1

SK-16D01-

F

E

D

B

A