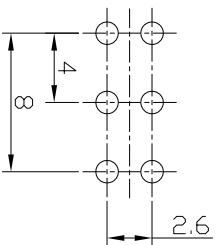
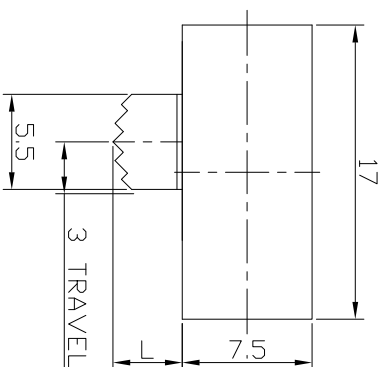
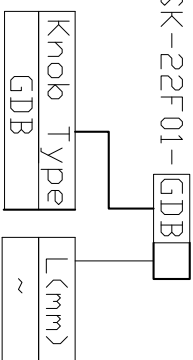
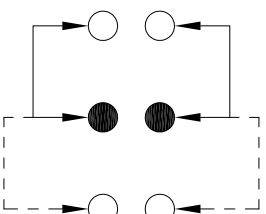


MODEL CODE

SK-22F01-GDB



P.C.B LAYOUT
BOTTOM VIEW



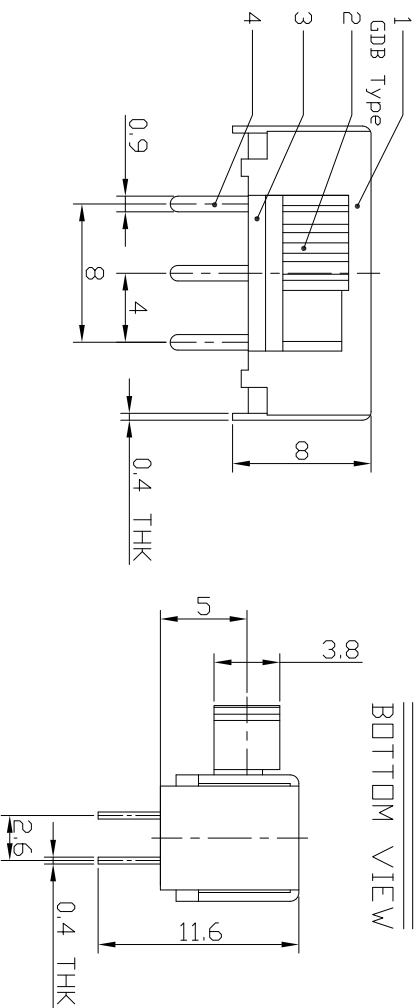
CIRCUIT DIAGRAM

Height (高度) :

NO. 1	L
PART NO	X

Main technical specifications:

Rated load (额定负荷) :	DC 50V 30mA
Contact impedance (接触阻抗) :	≤ 100m Ω MAX
Insulation impedance (绝缘阻抗) :	≥ 100M Ω MIN
TIMING	NON-SHORTING
OPERATING LIFE (电气寿命) :	100,000 cycles
Usage temperature (使用温度) :	-25 °C to 85 °C
CIRCUIT	2P2T
Trip (行程) :	2±0.2mm
Operating force (操作力) :	1 2 3 4 250±100g 5 6



public errand (公差) : ±0.2mm unit (单位) : mm

LCZY ELECTRONICS(SHEN ZHEN)CO.,LTD

COPYRIGHT RESERVED,PLEASE DO NOT COPY.

PART NAME SWITCH SK-22F01

PART NO.	SK-22F01
UNIT :	mm
TOLERANCE	UP TO 5
OTHERWISE	ABOVE 5~30
ANGLE	ABOVE 30
±0.2	±0.3
±0.3	±0.5
±0.5	±3

DRAWING CHECK G.L.CHEN DWG.No. LCZY

APPROVAL Z.LIU REV. A1

SCALE 2:1 DATE SK-09-2019

PAGE 1 OF 1

F

E

D

SK-22F01-□

B

A

F

E

D

C

B

A