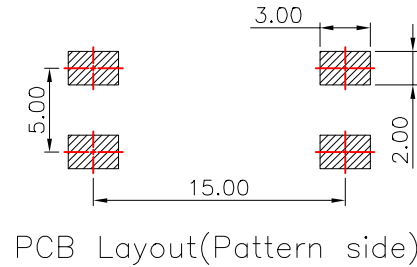
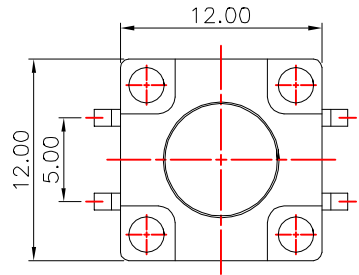


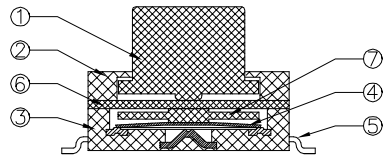
RoHS

Height(高度) :NO.1

10.5	J	16.0	T
10.0	I	15.0	S
9.5	H	14.5	R
9.0	G	14.0	Q
8.5	F	13.5	P
8.0	E	13.0	O
7.5	D	12.5	N
7.0	C	12.0	M
6.5	B	11.5	L
6.0	A	11.0	K
高度H(mm)	X=	高度H(mm)	X=



PCB Layout(Pattern side)



Material: 防水等级IP67

Button 按钮	PBT/LCP
Cover plate 盖板	PBT/LCP
Shrapnel 弹片	不锈钢(复银)
Base 基座	PBT/LCP
Pin 引脚	磷铜(镀银)

Main technical specifications:

Rated load(额定负荷):	DC 12V 50mA	
Contact impedance(接触阻抗):	100m MAX	
Insulation impedance(绝缘阻抗):	100M MIN	
Welding resistance temperature(耐焊温度):	250 ± 5 ° 5s	
OPERATING LIFE(电气寿命):	100,000 cycles	
Usage temperature(使用温度):	-25 to 85	
Operating humidity(使用湿度):	85% RH	
Trip(行程):	0.35 ± 0.1mm	
Operating force(操作力):	1 90 ± 30gf	2 130 ± 30gf
	3 180 ± 50gf	4 250 ± 50gf
	5 350 ± 50gf	6

NO.2

public errand(公差) : ±0.2mm unit(单位) : mm

LCZY ELECTRONICS(SHEN ZHEN)CO.,LTD

PART NAME		SWITCH		DRAWING	G.L CHEN	DWG.No.	LCZY
PART NO.		K2-1841SP		CHECK	Z.LIU	REV.	A1
UNIT : mm	TOLERANCE OTHERWISE	UP TO 5 ±0.2	ABOVE 5~30 ±0.3	APPROVAL	DATE		K2-09-2019
		ABOVE 30 ±0.5	ANGLE ±3°		SCALE	2:1	PAGE

COPYRIGHT RESERVED,PLEASE DO NOT COPY.

K2-1841SP- -