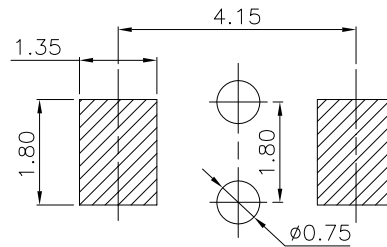
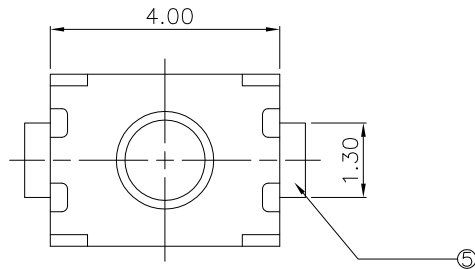
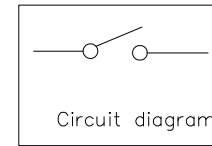


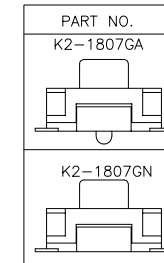
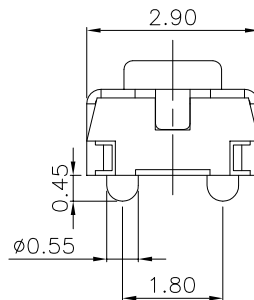
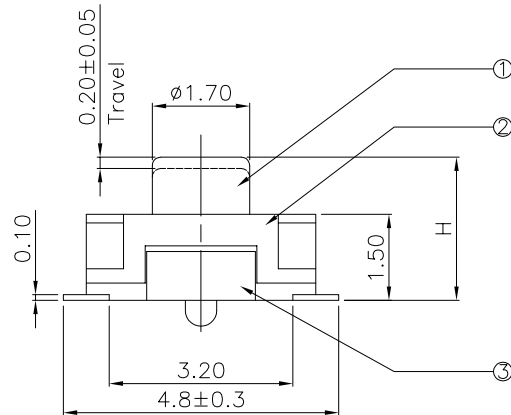
RoHS

Material:

Button 按钮	硅胶 (蓝色)
Cover plate 盖板	铜 (镀银)
Shrapnel 弹片	不锈钢 (复银)
Base 基座	PBT/LCP耐温
Pin 引脚	磷铜 (镀银)



PCB Layout



Height (高度):

NO.1	
PART NO	H
D	2.0
F	2.5

Main technical specifications:

Rated load (额定负荷):	DC 12V 50mA	
Contact impedance (接触阻抗):	100m MAX	
Insulation impedance (绝缘阻抗):	100M MIN	
Welding resistance temperature (耐焊温度):	250 ± 5 ° 5s	
OPERATING LIFE (电气寿命):	100,000 cycles	
Usage temperature (使用温度):	-25 to 85	
Operating humidity (使用湿度):	85% RH	
Trip (行程):	0.2 ± 0.1mm	
Operating force (操作力):	1 90 ± 30gf	2 130 ± 30gf
	3 180 ± 50gf	4 250 ± 50gf
	5 350 ± 50gf	6

public errand (公差): ±0.2mm unit (单位): mm

NO.2

LCZY ELECTRONICS(SHEN ZHEN)CO.,LTD

PART NAME		SWITCH		DRAWING	G.L CHEN	DWG.No.	LCZY	
PART NO.		K2-1807GA		CHECK	Z.LIU	REV.	A1	
UNIT :	TOLERANCE	OTHERWISE	UP TO 5	±0.2	ANGLE	APPROVAL	DATE	K2-09-2019
			ABOVE 5~30	±0.3				
mm			ABOVE 30	±0.5		SCALE	PAGE	1 OF 1
			ANGLE	±3'		2:1		

COPYRIGHT RESERVED,PLEASE DO NOT COPY.

K2-1807GA/K2-1807GN-