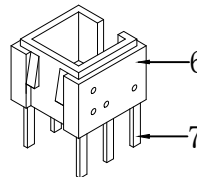
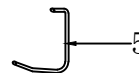
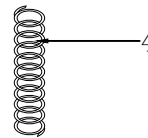
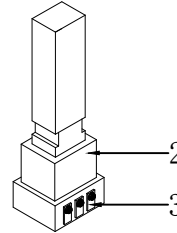
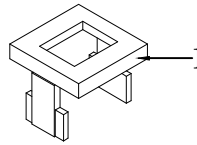
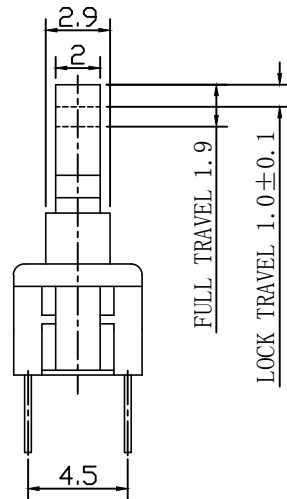
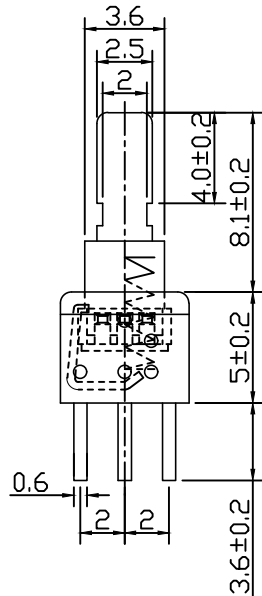
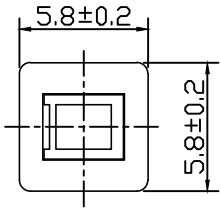


RoHS



function(功能) :

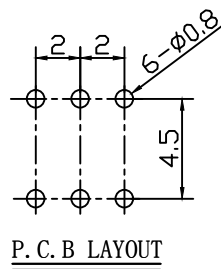
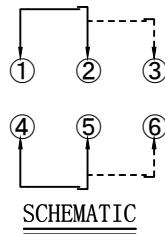
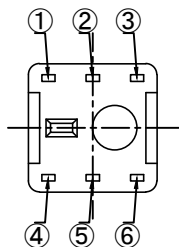
NO.1	
PART NO	
L	自锁
N	无锁

Material :

8				
7	TERMINAL	BRASS STRIP	6	Ag PLATED
6	CASE	PA66	1	GRAY
5	LOCK PIN	SUS WIRE	1	NATURAL
4	SPRING	SUS WIRE	1	NATURAL
3	CONTACT	PBS	2	Ag PLATED
2	KNOB	PBT	1	BLACK
1	COVER	PBT	1	BLACK
NO.	PART NAME	MATERIAL	QTY.	FINISHING

Main technical specifications:

Rated load(额定负荷):	DC 30V 0.5A	
Contact impedance(接触阻抗):	100m MAX	
Insulation impedance(绝缘阻抗):	100M MIN	
Welding resistance temperature(耐焊温度):	250±5 ° 5s	
OPERATING LIFE(电气寿命):	20,000 cycles	
Usage temperature(使用温度):	-25 to 80	
Operating humidity(使用湿度):	85% RH	
Trip(行程):	1.5±0.2mm	
Operating force(操作力):	1	2
	3	4
	5	6
	200±50gf	



public errand(公差) : ±0.2mm unit(单位) : mm

LCZY ELECTRONICS(SHEN ZHEN)CO.,LTD

COPYRIGHT RESERVED,PLEASE DO NOT COPY.

PART NAME		SWITCH		DRAWING	G.L CHEN	DWG.No.	LCZY
PART NO.		K8-5851DJG		CHECK	Z.LIU	REV.	A1
UNIT :	TOLERANCE	OTHERWISE	UP TO 5	ANGLE	APPROVAL	DATE	K8-09-2019
			±0.2				
mm			ABOVE 5~30		SCALE	PAGE	1 OF 1
			±0.3		2:1		
			ABOVE 30				
			±0.5				
			±3'				

K8-5851DJG- -