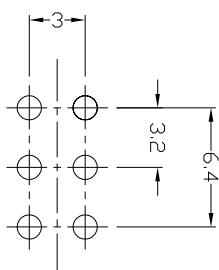
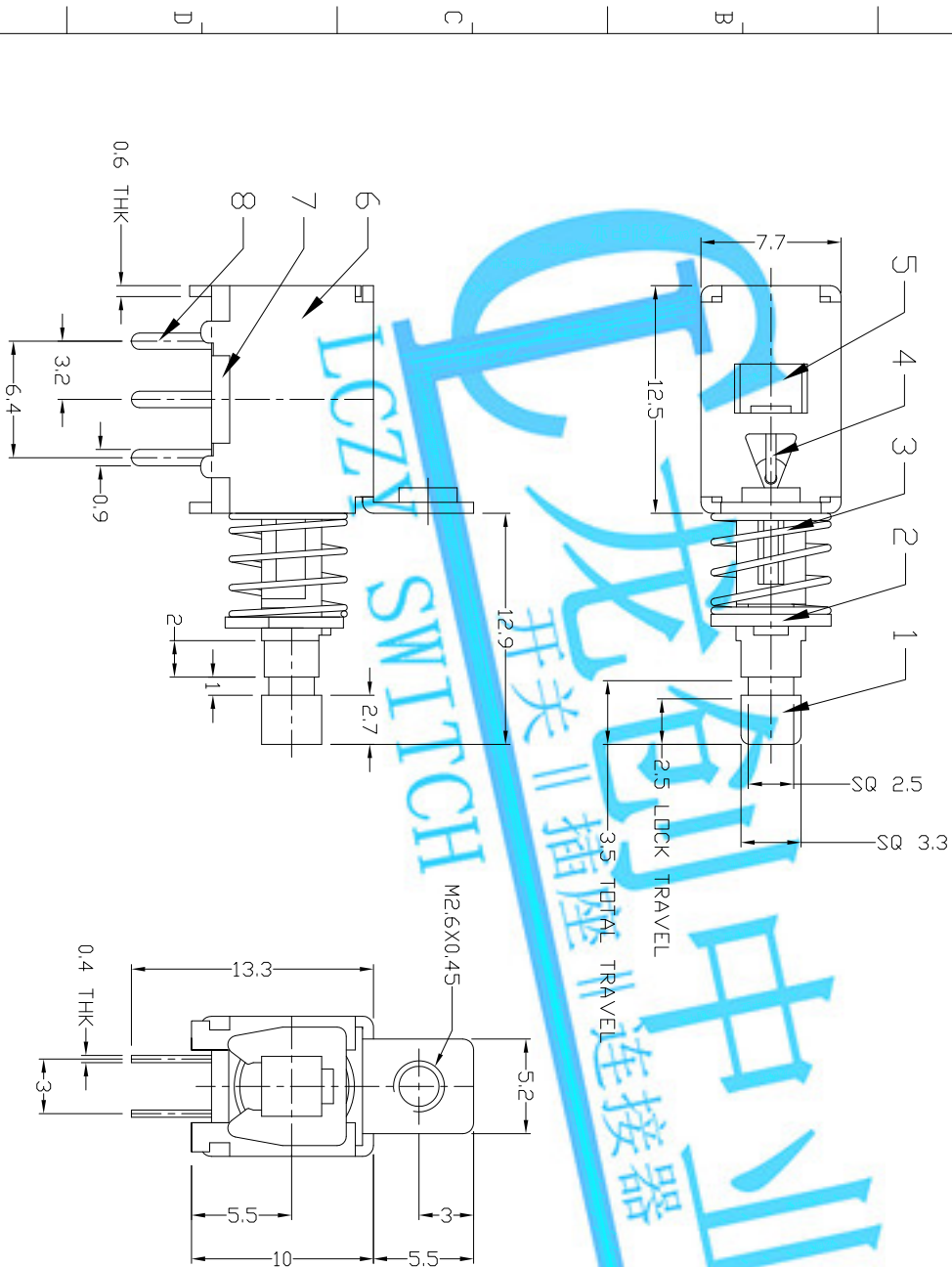


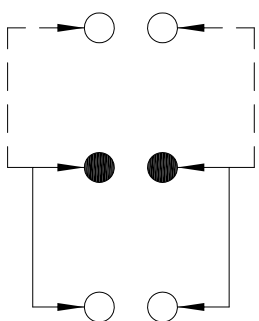


RoHS
Compliant
2002/95/EC

DIMENSIONS



P.C.B LAYOUT
BOTTOM VIEW



CIRCUIT DIAGRAM

ELECTRO-MECHANICAL CHARACTERISTICS

Refer to additional specifications

RATING	DC50V 0.3A	
CIRCUIT	2P2T	
CONTACT RESISTANCE	100mΩ MAX.	
TIMING	NON-SHORTING	
OPERATING MODE	SELF-LOCK	AP-22F05L
	NON-LOCK	AP-22F07N
STROKE	TOTAL 3.5mm	LOCK 2.5mm
OPERATING FORCE	350±100gf	
OPERATING LIFE(cycles)	10,000	

9	CONTACT CLIP	PBS STRIP	2	AG PLATED
8	TERMINAL	BRASS STRIP	6	AG PLATED
7	BASE	PHENOLIC RESIN	1	NATURAL
6	FRAME	STEEL STRIP	1	NI-PLATED
5	SPRING PLATE	PBS STRIP	1	NATURAL
4	CAM STICK	PBS WIRE	1	NATURAL
3	SPRING	STEEL WIRE	1	NI-PLATED
2	BLOCK	STEEL STRIP	1	NI-PLATED
1	KNDB	PA66	1	BLACK
ND1	PARTS	MATERIAL	Q'TY	FINISHING

WITHIN 1.5mm±0.1mm
OVER 1.5mm±0.2mm

UNITS mm
MATERIAL SEE NOTE
FINISH SEE NOTE

LONGCHUANG ZHONGYE (HK)CO.,LIMITED

TITLE:	PUSH SWITCH / HORIZONTAL	
DR:	2015/03/31	2015/03/31
CHKD:	2015/03/31	2015/03/31
APPD:		
PART NO.:	AP-22F05L & AP-22F07N	
DWG NO.:	ADL-22F0507	
SCALE	SHEET	REV.
2:1	1/1	A
		CUSTOMER DRAWING

REV.	ECN.	NO.	APPL.